

What's New

Essential Studio User Interface Edition



Table of Contents

Essential Grid	3
Grid for ASP.NET	3
Grid for ASP.NET MVC.....	3
Grid for Silverlight	9
Grid for WPF.....	10
Essential Tools.....	12
Tools for ASP.NET.....	12
Tools for ASP.NET MVC.....	12
Tools for Silverlight	15
Tools for Windows Forms	24
Tools for WPF.....	28
Essential Chart	28
Chart for ASP.NET	31
Chart for ASP.NET MVC.....	32
Chart for Windows Forms	35
Essential Diagram.....	37
Diagram for Silverlight	37
Diagram for WPF.....	41
Essential Gauge.....	43
Gauge for ASP.NET MVC	43
Essential Schedule.....	44
Schedule for ASP.NET MVC.....	44
Schedule for Silverlight	49

Essential Grid

Grid for ASP.NET

Multicolumn Grouping in Pass-Through Grouping

Essential Grid has added multicolumn grouping in pass-through grouping mode. Pass-through grouping is a great way to take control of data being retrieved from a data source. With pass-through grouping, LINQ will take charge of all data retrieval, performing paging, sorting, and grouping by querying the data source—leading to better performance.

OrderID	CustomerID	OrderDate	Freight	ShippedDate	ShipCountry	ShipName
OrderDate: 7/4/1996 12:00:00 AM - 16 Items						
OrderID: 10248 - 1 Items						
10248	VINET	7/4/1996 12:00:00 AM	32.3800	7/16/1996 12:00:00 AM	France	Vins et alcools Chevalier
OrderID: 11078 - 1 Items						
11078	VINET	7/4/1996 12:00:00 AM	32.3800	7/16/1996 12:00:00 AM	France	Vins et alcools Chevalier
OrderID: 11908 - 1 Items						
11908	VINET	7/4/1996 12:00:00 AM	32.3800	7/16/1996 12:00:00 AM	France	Vins et alcools Chevalier
OrderID: 12738 - 1 Items						
12738	VINET	7/4/1996 12:00:00 AM	32.3800	7/16/1996 12:00:00 AM	France	Vins et alcools Chevalier
OrderID: 13568 - 1 Items						
13568	VINET	7/4/1996 12:00:00 AM	32.3800	7/16/1996 12:00:00 AM	France	Vins et alcools Chevalier
OrderID: 14398 - 1 Items						
14398	VINET	7/4/1996 12:00:00 AM	32.3800	7/16/1996 12:00:00 AM	France	Vins et alcools Chevalier
OrderID: 15228 - 1 Items						
15228	VINET	7/4/1996 12:00:00 AM	32.3800	7/16/1996 12:00:00 AM	France	Vins et alcools Chevalier
OrderID: 16058 - 1 Items						
16058	VINET	7/4/1996 12:00:00 AM	32.3800	7/16/1996 12:00:00 AM	France	Vins et alcools Chevalier
OrderID: 16888 - 1 Items						
16888	VINET	7/4/1996 12:00:00 AM	32.3800	7/16/1996 12:00:00 AM	France	Vins et alcools Chevalier
OrderID: 17718 - 1 Items						
17718	VINET	7/4/1996 12:00:00 AM	32.3800	7/16/1996 12:00:00 AM	France	Vins et alcools Chevalier

PostBack Time: 752ms

Multicolumn Grouping

Grid for ASP.NET MVC

Dragging Elements onto Grid Rows

This feature allows any element to be dragged, using JQueryUI Draggable, and dropped into our grid. Elements can also be dropped into a specified row in the table as the row is highlighted.



Element Dragging

Toggle Selection Mode

This feature allows the selection of grid rows to be toggle on or off. A row that has already been selected can be unselected by simply clicking on it.

Order ID	Employee ID	Customer ID	Order Date	Freight
10000	6	FRAN5	05/10/1991	4.45
10001	8	HEREP	05/13/1991	76.45
10002	3	FOKAD	05/14/1991	56.18
10003	8	SIMOB	05/15/1991	18.59
10004	3	LAFFE	05/16/1991	20.12
10006	8	FRAN5	05/20/1991	6.73
10006	8	FRAN5	05/21/1991	3.82
10007	4	HORGA	05/22/1991	26.19
10008	3	FURIS	05/23/1991	74.22
10009	8	SEVES	05/24/1991	49.21
10010	8	SIMOB	05/28/1991	3.01
10011	6	WELLI	05/29/1991	21.54

Grid with Selection Toggling Enabled

Support for Custom Binding

Essential Grid supports a custom binding feature for paging, sorting, and filtering actions.

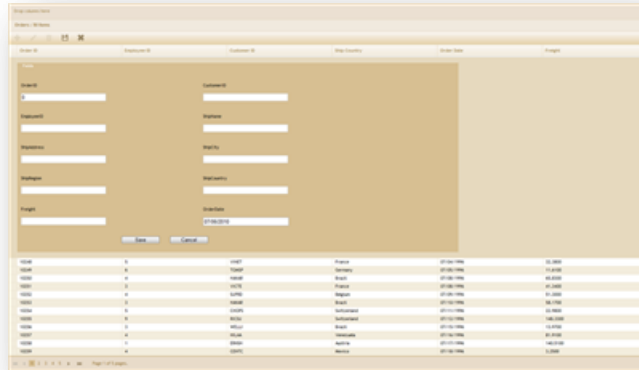
Order ID	Order Date	Customer ID	Ship Country	Ship City	Freight
10248	04/07/1996	VNET	France	Rates	32
10249	05/07/1996	TOMSP	Germany	Munster	12
10250	06/07/1996	HANAR	Brazil	Rio de Janeiro	66
10251	06/07/1996	VICTE	France	Lyon	41
10252	09/07/1996	SUPRO	Belgium	Charleroi	51
10253	10/07/1996	HANAR	Brazil	Rio de Janeiro	58
10254	11/07/1996	CHOPS	Switzerland	Bern	23
10255	12/07/1996	RICSO	Switzerland	Geneve	148
10256	15/07/1996	WELLI	Brazil	Rosende	14
10257	16/07/1996	MILAA	Venezuela	San Cristobal	82
10258	17/07/1996	BODSH	Austria	Graz	141
10259	18/07/1996	GDNTC	Mexico	Mexico D.F.	3

Grid with Custom Binding Enabled

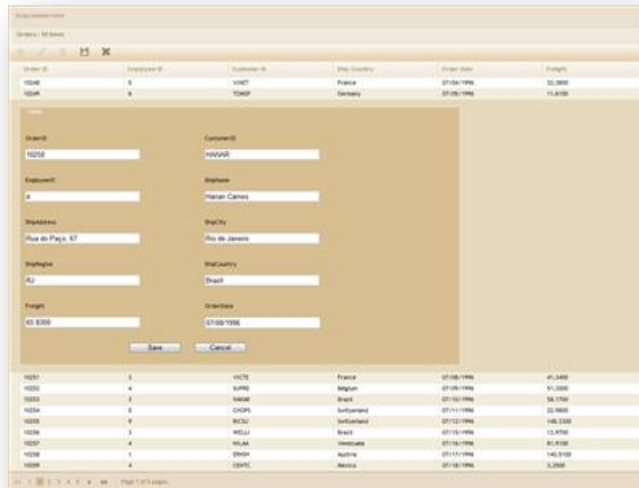
Inline Template Form in Editing Mode

Essential Grid supports templates for form editing. Using this feature, you can easily customize forms.

What's New for 2010 Volume 3: Essential Studio User Interface Edition



Adding Records to a Grid-Inline Form template



Grid with Editable Rows

Selection Toggling

This feature allows selecting one or more rows using jQuery UI selectable. After a selection is made, you can click on any selected row and drag it to any other element specified in the TargetHtmlElementId property.

What's New for 2010 Volume 3: Essential Studio User Interface Edition

Source Grid : 13 Items		
Order ID	Employee ID	Customer ID
10248	5	VINET
10249	6	TOMSP
10252	4	SUPRD
10253	3	HANAR
10254	5	CHOPS
10255	9	RICSU
10256	3	WELLI
10257	4	HILAA
10258	1	ERNSH
10259	4	CENTC
10260	4	OTTIK
10261	4	QUEDE
10262	8	RATTC

Destination Grid : 2 Items		
Order ID	Employee ID	Customer ID
10250	4	HANAR
10251	3	VICTE

Dragging and Dropping Rows

Custom Formatting

Essential Grid provides a customization actions option that enables the fine tuning of individual cell appearances. These actions can be used to customize individual cell appearance and value, and to customize row appearance.

The grid also supports conditional formatting. Through this, users can apply different styles to cells based on user-defined value conditions.

Products : 20 Items						
Product ID	Product Name	Supplier ID	Unit Price	Units In Stock	Units On Order	Reorder Level
1	Chai	1	18.0000	39	0	10
2	Chang	1	19.0000	17	40	25
3	Aniseed Syrup	1	10.0000	12	70	25
4	Chef Anton's Cajun	2	22.0000	53	0	0
5	Chef Anton's Gumb	2	21.2500	8	0	0
6	Grandma's Boysen	3	25.0000	120	0	25
7	Uncle Bob's Organ	3	30.0000	15	0	10
8	Northwoods Cranb	3	40.0000	5	0	0
9	Mishi Kobe Niku	4	97.0000	29	0	0
10	Skura	4	31.0000	31	0	0
11	Queso Cabrales	5	21.0000	22	30	30
12	Queso Manchego I	5	38.0000	86	0	0
13	Konbu	6	6.0000	24	0	5
14	Tofu	6	23.2500	35	0	0
15	Genen Shoyu	6	15.5000	39	0	5
16	Pavlova	7	17.4500	29	0	10
17	Alice Mutton	7	39.0000	0	0	0
18	Carnarvon Tigers	7	62.5000	42	0	0
19	Teatime Chocolati	8	9.2000	25	0	5
20	Sir Rodney's Marm	8	81.0000	40	0	0

Grid Cells Formatted

What's New for 2010 Volume 3: Essential Studio User Interface Edition

Products : 20 Items

Product ID	Product Name	Supplier ID	Unit Price	Units In Stock	Units On Order	Reorder Level
1	Chai	1	18.0000	39	0	10
2	Chang	1	19.0000	17	40	25
3	Aniseed Syrup	1	10.0000	13	70	25
4	Chef Anton's Cajun	2	22.0000	53	0	0
5	Chef Anton's Gumb	2	21.3500	0	0	0
6	Grandma's Boysen	3	25.0000	120	0	25
7	Uncle Bob's Organ	3	30.0000	15	0	10
8	Northwoods Cranb	3	40.0000	6	0	0
9	Mishi Kobe Niku	4	97.0000	29	0	0
10	Rura	4	31.0000	31	0	0
11	Queso Cabrales	5	21.0000	22	30	30
12	Queso Manchego I	5	38.0000	86	0	0
13	Konbu	6	6.0000	24	0	5
14	Tofu	6	23.2500	35	0	0
15	Genen Shoyuys	6	15.5000	39	0	5
16	Pavlova	7	17.4500	29	0	10
17	Alice Mutton	7	39.0000	0	0	0
18	Carnarvon Tigers	7	62.5000	42	0	0
19	Teatime Choce	8	9.2000	25	0	5
20	Sir Rodney's Marm	8	81.0000	40	0	0

Grid Rows Formatted

Products : 27 Items

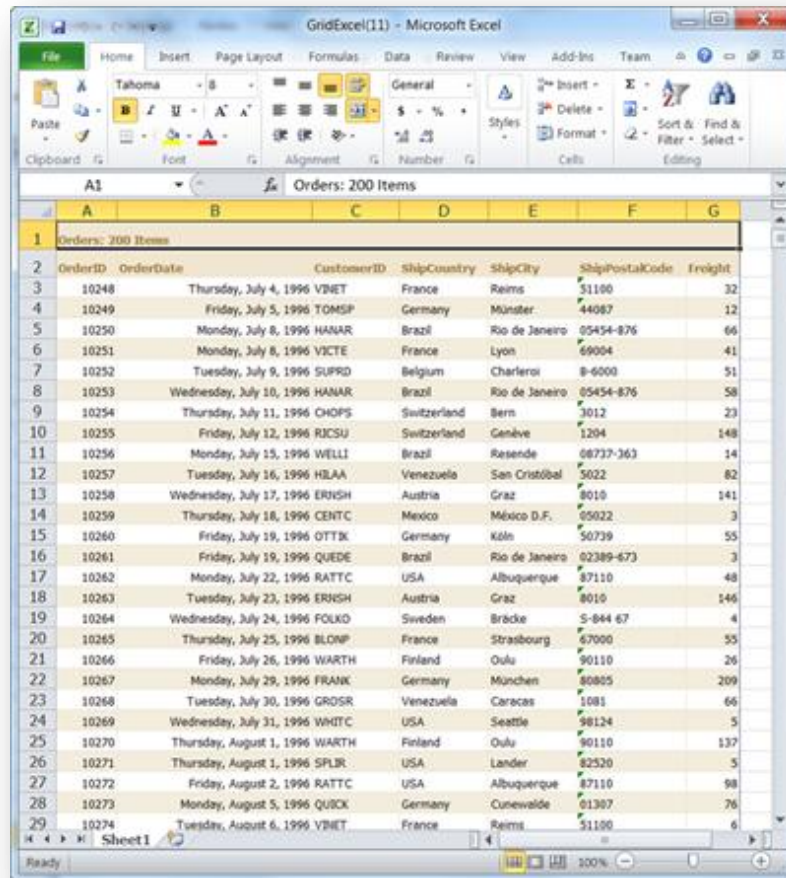
Product ID	Product Name	Supplier ID	Unit Price	Units In Stock	Units On Order	Reorder Level
1	Chai	1	18.0000	39	0	10
2	Chang	1	19.0000	17	40	25
3	Aniseed Syrup	1	10.0000	13	70	25
4	Chef Anton's Cajun Seasoning	2	22.0000	53	0	0
5	Chef Anton's Gumbo Mix	2	21.3500	0	0	0
6	Grandma's Boysenberry Spread	3	25.0000	120	0	25
7	Uncle Bob's Organic Dried Pears	3	30.0000	15	0	10
8	Northwoods Cranberry Sauce	3	40.0000	6	0	0
9	Mishi Kobe Niku	4	97.0000	29	0	0
10	Rura	4	31.0000	31	0	0
11	Queso Cabrales	5	21.0000	22	30	30
12	Queso Manchego La Pastora	5	38.0000	86	0	0

Page 1 of 7 pages.

Conditional Formatting

Support for Excel Exporting

Exporting to Excel is one of the most common functionalities required in the .NET world. Essential Grid has built-in support for Excel exporting. Users can download data from the grid control into an Excel spreadsheet for offline verification and/or computation with support for Excel versions 97-2000, 2007, and 2010.



Exported Grid

Support for EntityCollection Data Source

The Entity Framework supports an Entity Data Model (EDM) for defining data at both the storage and conceptual level and mapping between the two. It also enables developers to program directly against data types defined at the conceptual level as common language runtime (CLR) objects. Now Essential Grid supports Entity Framework as its data source.

What's New for 2010 Volume 3: Essential Studio User Interface Edition

Employee Details : 43 Items				
Employee ID	First Name	Last Name	Min	Ship City
A-C71970F	Arla	Cruz		26/00/1991
A-R89858F	Annette	Roulet		21/00/1990
AMD15433F	Ann	Devon	M	16/00/1991
ARD36773F	Anabela	Domingues	R	27/00/1993
CFH28514M	Carlos	Hernandez	F	21/00/1989
CGS88322F	Carline	Schmitt	G	07/00/1992
D8T39435M	Daniel	Tonini	B	01/00/1990
DWR65030M	Diego	Roel	W	16/00/1991
EHL44273F	Elizabeth	Lincoln	N	24/00/1990
F-C16315M	Francisco	Chang		03/00/1990
GHT50241M	Gary	Thomas	H	09/00/1988
H-839728F	Helen	Bennett		21/00/1989

Page 1 of 4 pages.

Grid Bound with Entity Model

Grid for Silverlight

Excel-Like Dragging and Dropping

This feature enables a cell's content, including styles, to be dragged between different locations in a grid. It uses IDataObject to copy data, store the information, and retrieve data.

	A	B	C	D	E	F	G	
1	45.1	13	73	37.71	12.37	Text83	80.92	
2	Text48	Text14	Text63	31.22	74	87.34	Text55	
3	76	39	76.27	74.73	87	21.05	83	
4	50.73			80.04	Text40	85	Text48	
5	52.75		26.49	74.7	55.88	29	35.27	
6	16		Text88	17	64	17.59	94	
7	22.65		34.89	17.62	97	Text20	77.14	
8	Text30		50.19	59.72	92	25.44	61	
9	Text59		29.22		47	47.07	43.71	14
10	16	39	20	85.27		95.42	76	92
11	Text20	16	83.43		87	12	35.86	28

Excel-Like Dragging and Dropping

Data Error Validation Support

Essential Grid now supports data error validation using IDataErrorInfo. Custom images can also be used to notify end-users of an error.

CustomerID	OrderID	Freight	ShipCountry
RISCU	10001	726.44	Argentina
VAFFE	10002	317.21	Canada
MEREP	10003	413.66	Brazil
LINOD	10004	978.07	Argentina
FRANS	10005	352.3	Brazil
PICCO	10006	46.68	Freight
SEVES	10007	738.41	Canada
BLONP	10008	343.37	Austria
ALFKI	10009	698.39	Austria
FRANS	10010	94.02	Canada
LINOD	10011	252.02	Brazil
SEVES	10012	63.6	Belgium

Data Error Validation

Grid for WPF

Inheritance Context Support

The grid control now supports inheritance context, which can be used to bind values to elements not present in the visual tree.

```
<TextBox Text="Test" x:Name="txtBlock" />
```

Separate TextBlock text can be bound to GridDataVisibleColumn using the following code.

```
<syncfusion:GridDataControl AutoPopulateColumns="False"  
x:Name="dataGrid" ItemsSource="{Binding}">
```

```
<syncfusion:GridDataControl.VisibleColumns >
```

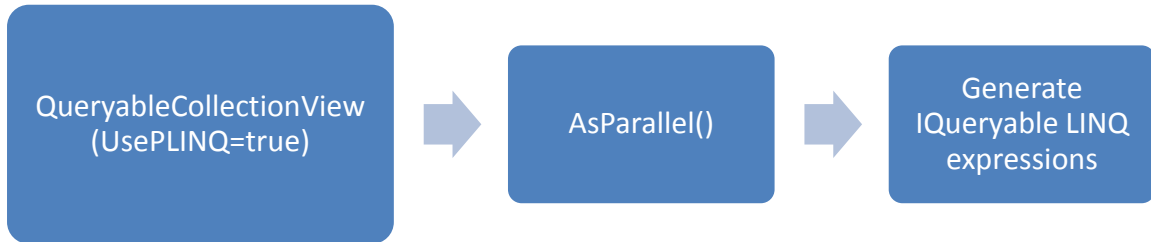
```
<syncfusion:GridDataVisibleColumn MappingName="Status" Width="200"  
HeaderText="{Binding Text, ElementName=txtBlock}" />
```

```
</syncfusion:GridDataControl.VisibleColumns>
```

```
</syncfusion:GridDataControl>
```

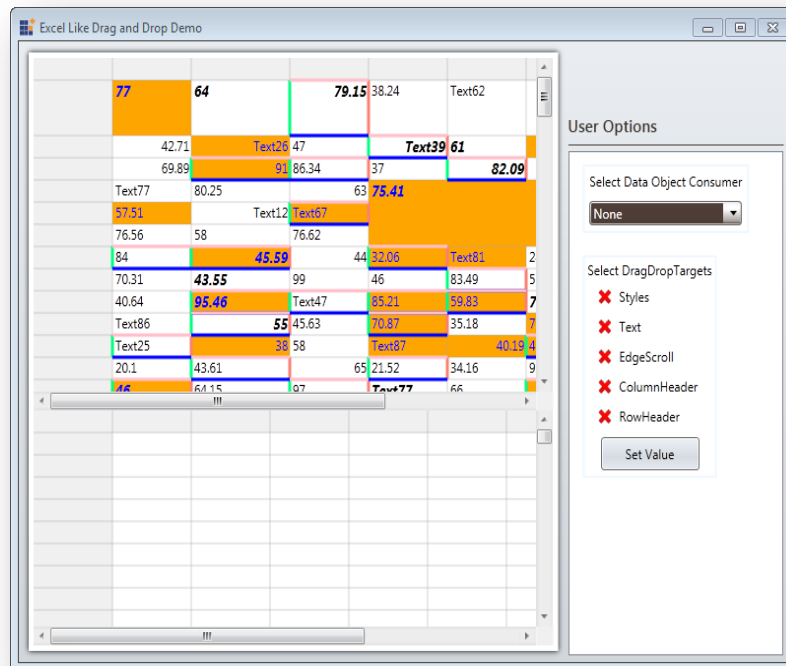
PLINQ Support for GridDataControl

The grid control uses a **QueryableCollectionView** that works on top of LINQ expressions for performing major operations such as sorting, filtering, grouping, and calculating summaries.



Excel-Like Dragging and Dropping

This feature enables dragging cell content, including styles, between different locations in the same grid as well as other grids. This feature uses IDataObject to copy data and store the information, and to retrieve data.



Essential Tools

Tools for ASP.NET

UploadBox: OnUploading Client-Side Event

The ClientSideOnUploading event of UploadBox can be used to check the size of a file that is to be uploaded, and can cancel the upload operation if the file's size is too large.

TreeView Client-Side methods for Expand/Collapse

Now the TreeView control supports expanding or collapsing tree-view nodes on the client side by using dedicated methods.

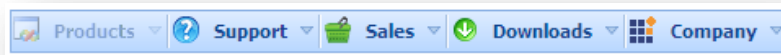
Increasing or Decreasing Dates in DateTimeTextbox

Now the DateTime text box is optimized so that dates can be either increased or decreased in succession.

Tools for ASP.NET MVC

Disabling Menu Items

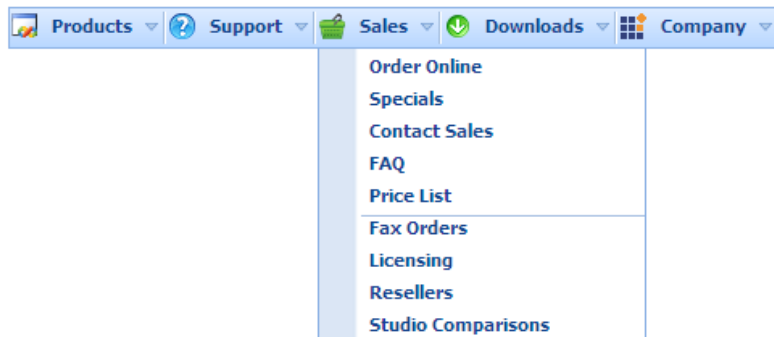
Essential Tools now supports disabling and enabling menu items from the client side, thereby preventing end-users from interacting with a particular menu item.



Menu with Items Disabled

Menu Separator

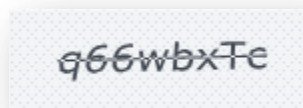
Essential Tools now supports the addition of a separator between menu items so they can be grouped into categories. The separator can be inserted anywhere between two li tags when building menu content.



Menu with Separators

Captcha Control

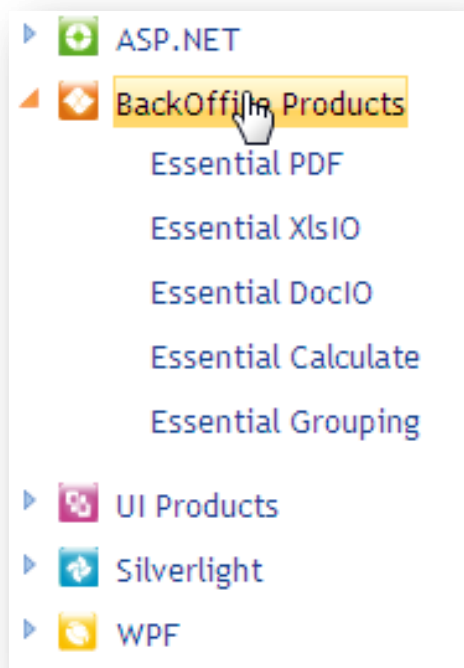
With the new SynCFusion Captcha control, you can be assured that only humans are accessing your site, saving your servers from automated requests and freeing your blogs from spam.



Captcha

Expand Mode in Tree View

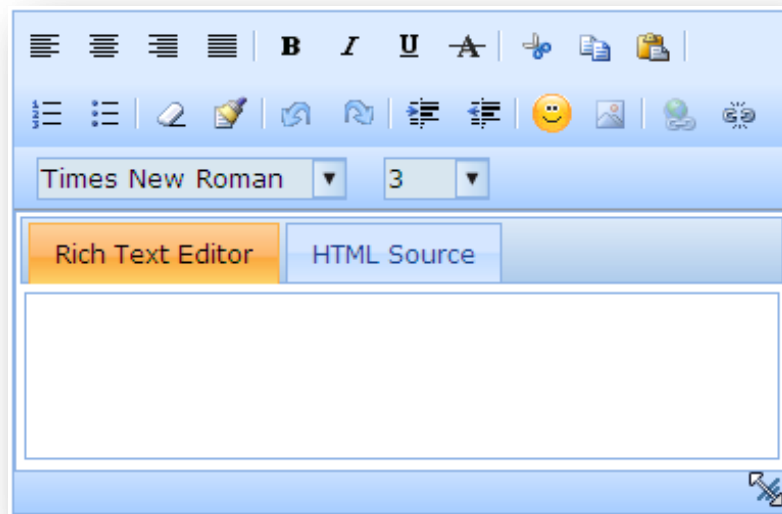
Essential Tools now supports two types of expand modes, allowing you to expand single and multiple nodes at a time.



Expand Mode

Resizing Rich Text Editor

The rich-text editor now supports resizing, allowing you more control over the size of the editor.



Resizing the RTE

Rating Feature

The rating control provides an intuitive rating experience that allows you to issue a rating by selecting stars.



Rating Control

Tag Cloud

The tag cloud control provides a visual depiction of user-generated tags where the importance of each tag can be differentiated with varied font sizes, colors, and styles.

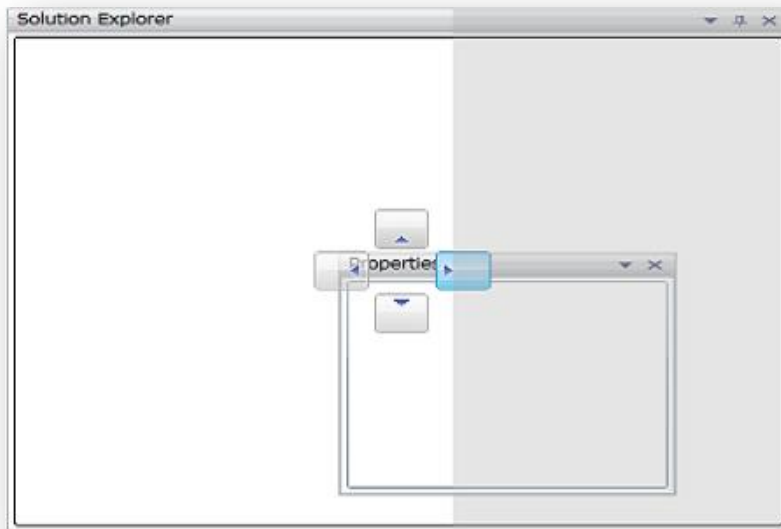


Tag Cloud

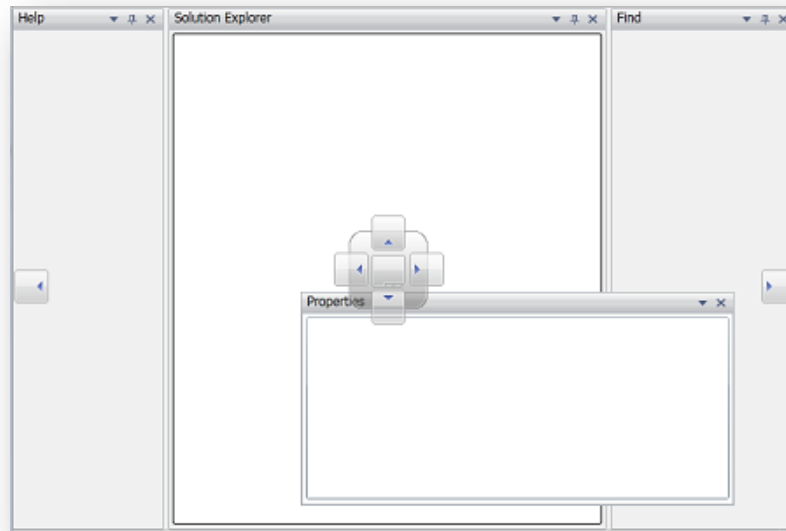
Tools for Silverlight

DockAbility and OuterDockAbility

Using the DockAbility and OuterDockAbility properties, you can show or hide docking hints for a window.



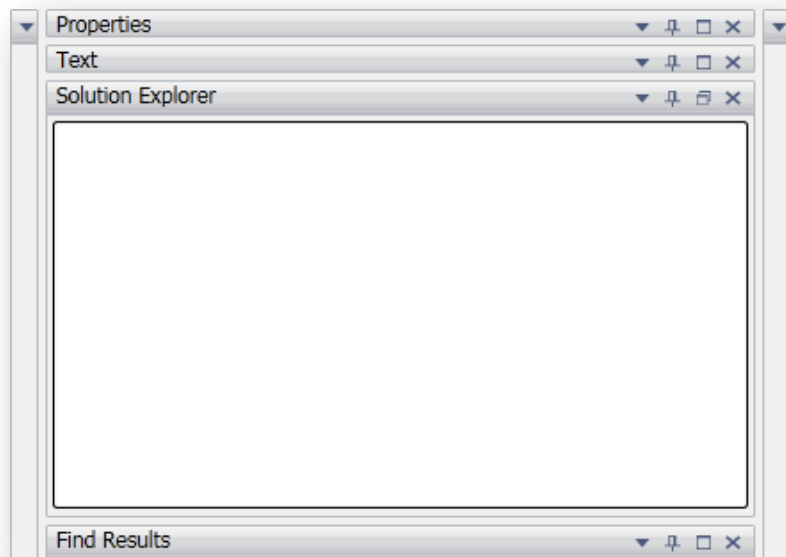
DockAbility Property in Use



OuterDockAbility Property in Use

Maximize Window Support

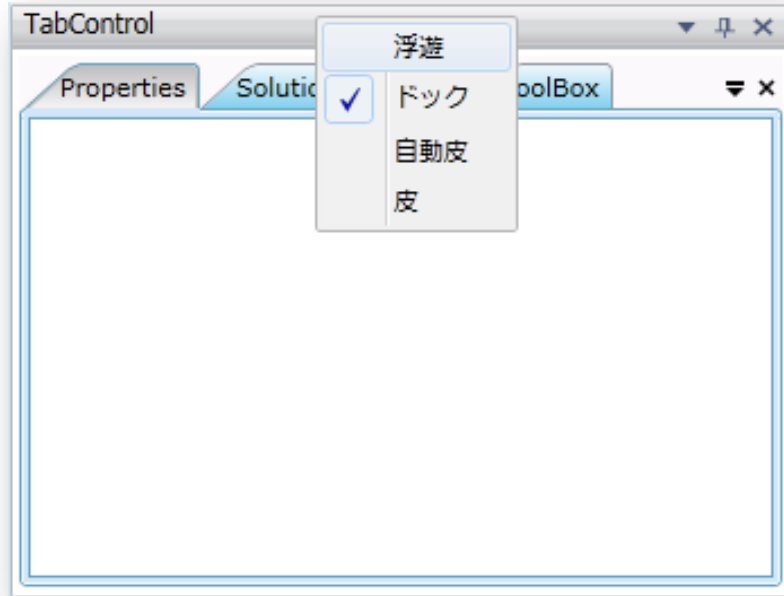
The visibility of the DockingManager's Maximize button can be controlled, allowing you to maximize a window or restore it to the original size.



Maximized Window

Localization

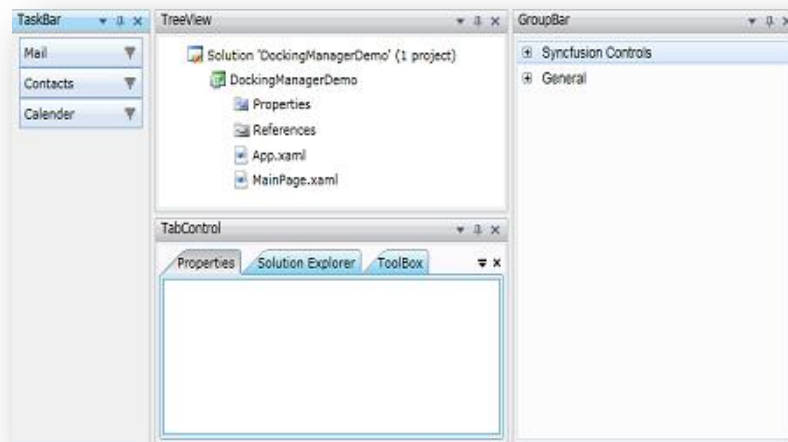
DockingManager supports the localization of strings for a particular culture.



Localization

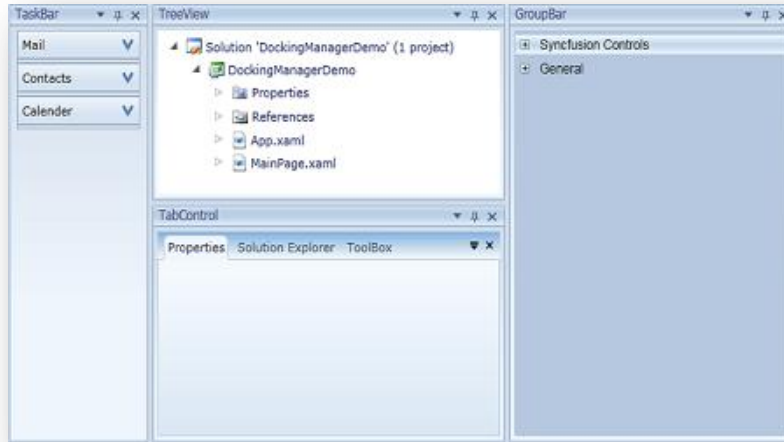
Skins

New skins have been added for DockingManager—Office 2010 (Blue, Black, Silver) and Windows 7.



Windows 7

What's New for 2010 Volume 3: Essential Studio User Interface Edition



Office 2010 Blue

Office 2007-Style Ribbon

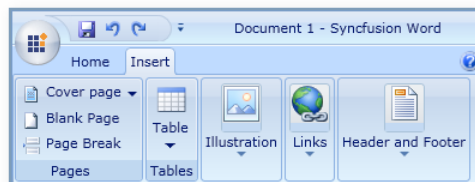
The Synclfusion ribbon control simulates the same ribbon UI element found in Microsoft Office 2007. It contains many of the same features of the new Office ribbon while keeping in step with Silverlight architecture.



Ribbon Control

Dynamic Resizing

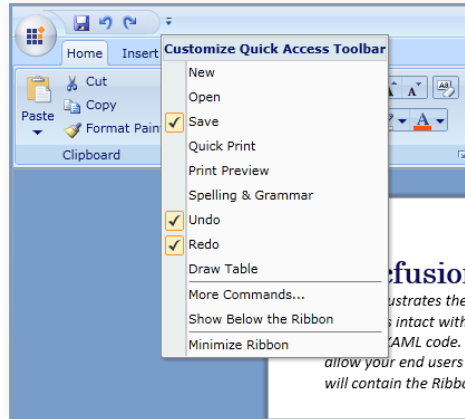
Dynamic resizing support ensures that ribbon items will not be hidden or clipped when the ribbon is resized. The items will resize themselves and fit into the ribbon space that is available.



Dynamic Resizing

Quick Access Toolbar Synchronization

The ribbon control now allows the Quick Access Toolbar to synchronize with custom commands defined by the user. You can add custom commands to the synchronized commands collection, and they will synchronize with the QAT.



QAT Synchronization

Expression Blend Support

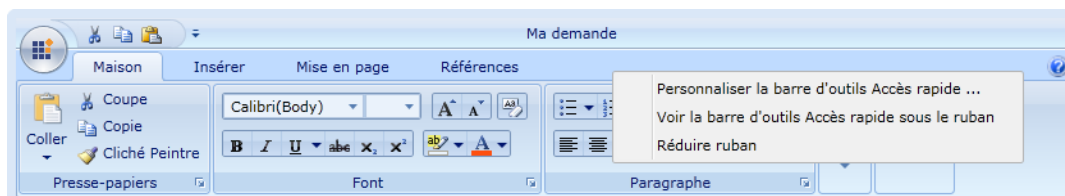
The ribbon control template can be easily customized using Expression Blend.



Style Edited Using Expression Blend

Localization

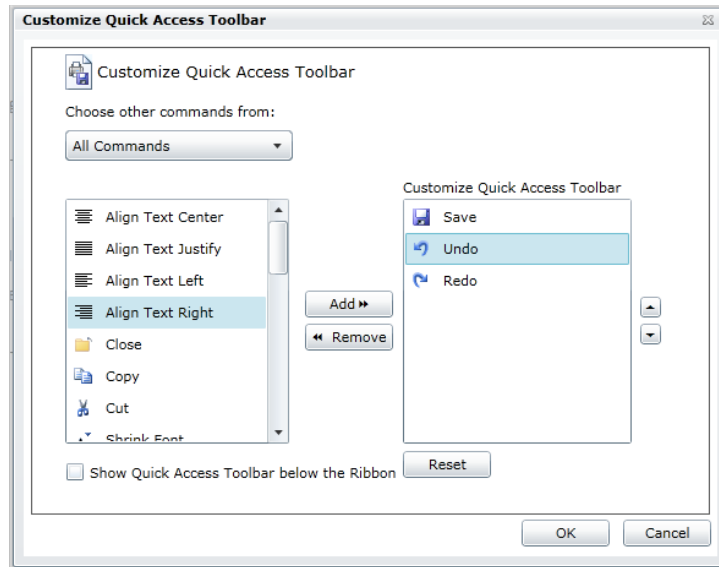
The ribbon control now ships with complete localization support.



Ribbon Control with French Culture

Ribbon Command Manager

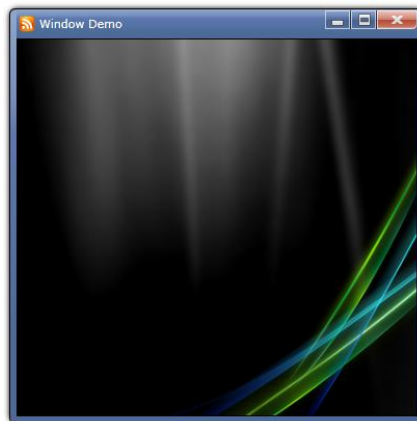
The Ribbon Command Manager allows you to register custom commands. Those commands will be shown in the Customize Quick Access Toolbar dialog, where you can pick commands to add to the quick-access toolbar.



Customization Window

Window Control

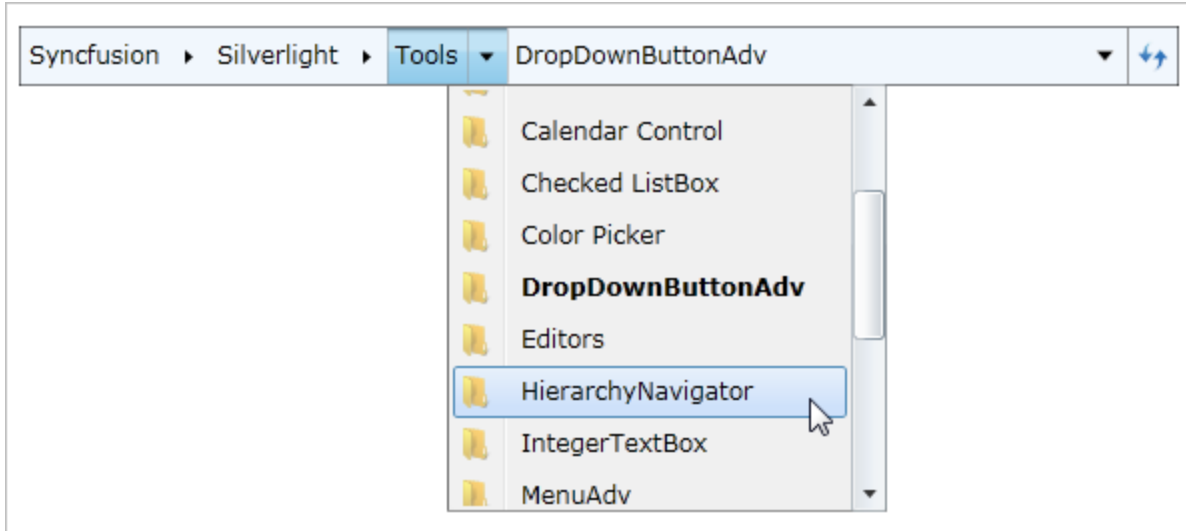
The Syncfusion Window Control provides highly customizable modal and modeless dialogs for an application. Predefined dialogs (Alert and Prompt) replace the traditional dialog boxes. Window state and position can also be easily configured in XAML or code-behind.



Window Control

Hierarchical Navigator

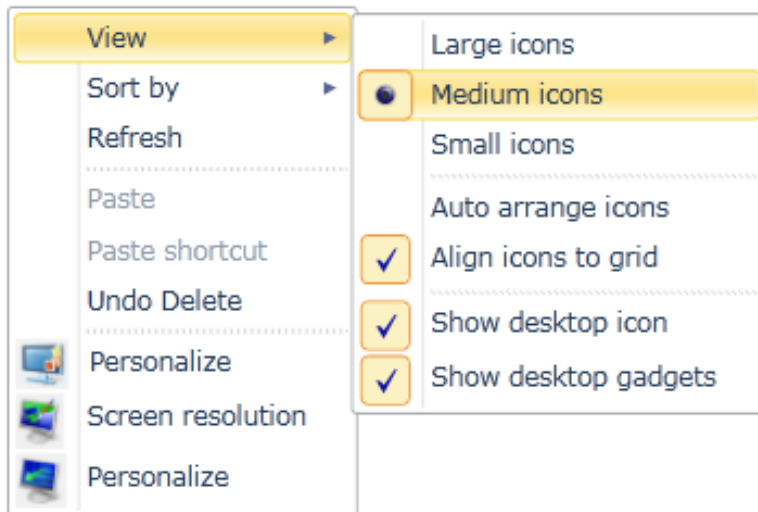
The **HierarchyNavigator** control for Silverlight provides a bread-crumbs interface similar to the Windows 7 address bar in Windows Explorer, which is used to navigate hierarchical items. It can be completely customized with Expression Blend by using custom templates. It also provides command binding with MVVM support, data binding via HierarchicalDataTemplate, XML data, and WCF services.



HierarchyNavigator Control

Context Menu

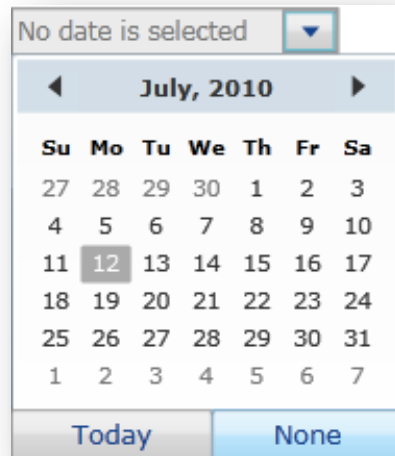
Context menus now provide support for boundary detection, check boxes, radio buttons, multilevel menu items, and customization through Expression Blend.



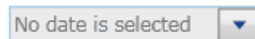
Context Menu

Null Values for DateTimeEdit

The DateTimeEdit control now supports null values.



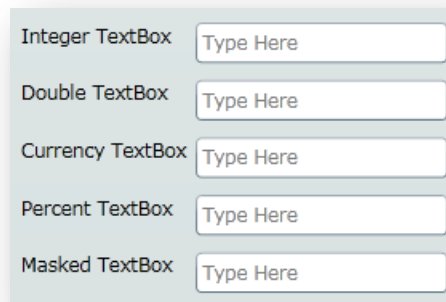
DateTimeEdit



Null Value Support

Watermarks

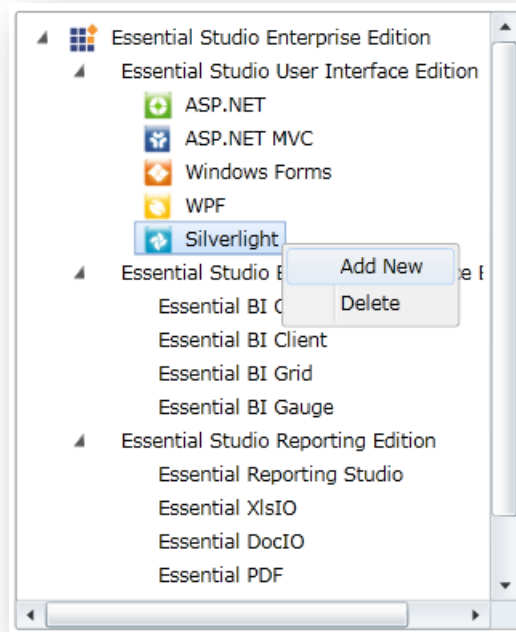
All editor controls now support watermarks.



Watermarks

TreeView

The TreeView control now supports context menus and Expression Blend.



Tree View

ButtonAdv

Expression Blend support has been added, as well as command binding, to ButtonAdv. Various size modes and built-in themes are also available.



ButtonAdv Control

DropDownButtonAdv

In the DropDownButtonAdv control, Expression Blend support has been added; various size modes are now available; and built-in themes have been included.



DropDownButtonAdv Control

SplitButtonAdv

Expression Blend support and command binding have been added to the SplitButtonAdv control. Built-in themes and drop-down styles have also been included, and various size modes are now available.

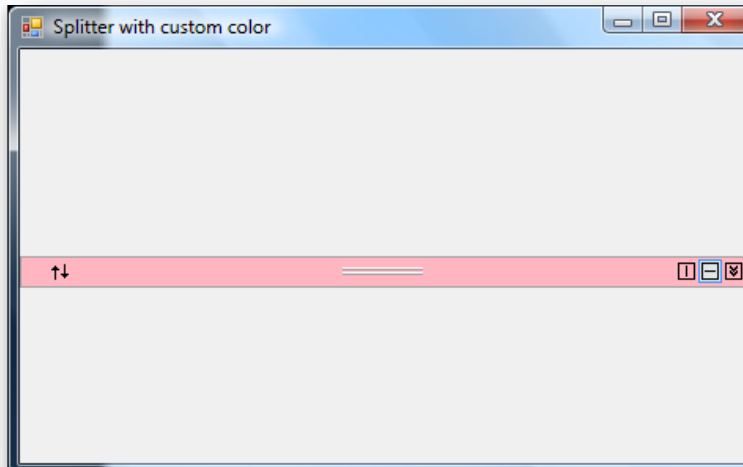


SplitButtonAdv

Tools for Windows Forms

Customizable Splitter Back Color

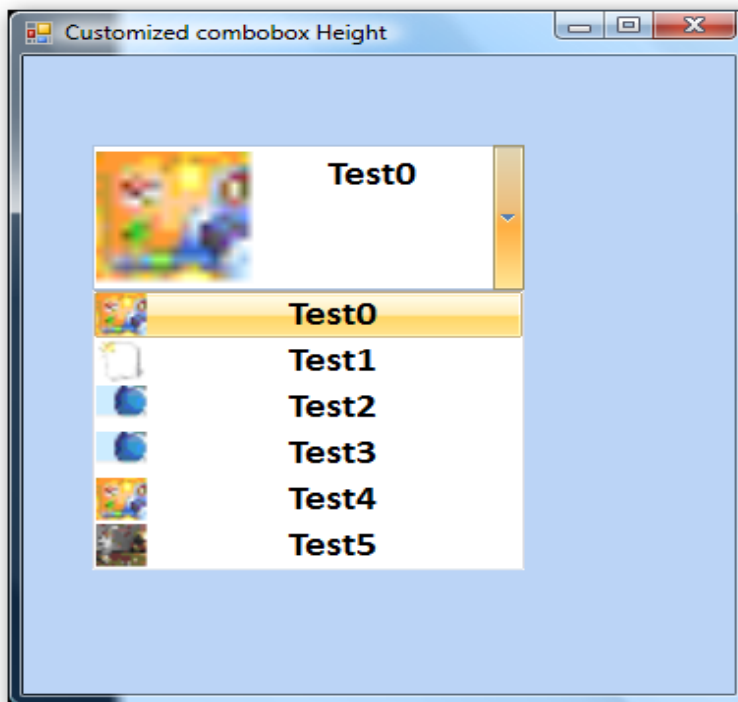
TabSplitterContainer now supports customizable back colors for splitters.



Splitter with Customized Back Color

Customizable Height

ComboBoxAdv comes with support to customize its height, giving you more space to display large images and text.

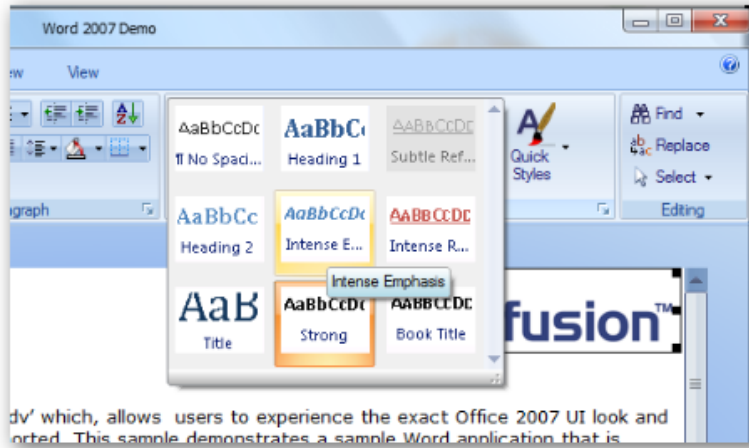


ComboBoxAdv with Customized Height

ToolTips for Individual Gallery Items

RibbonControlAdv now supports ToolTips for individual gallery items when the mouse pointer moves over.

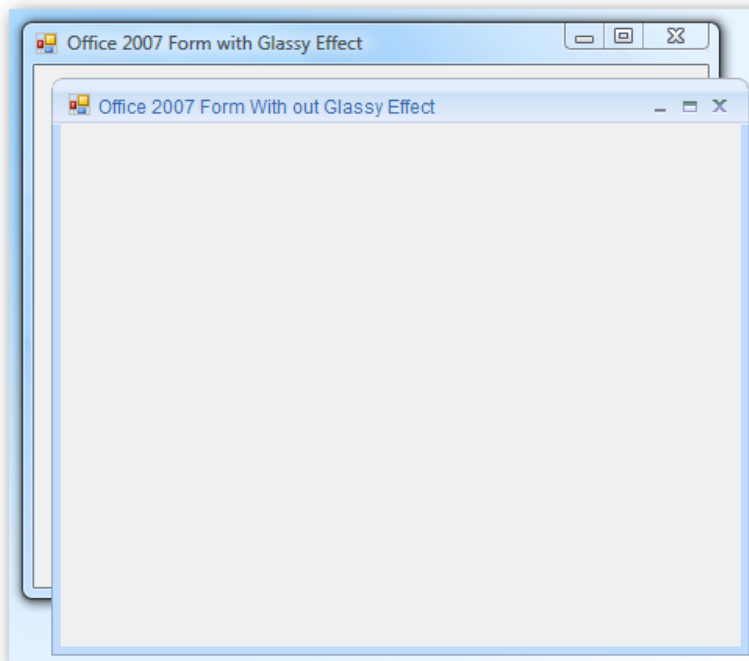
What's New for 2010 Volume 3: Essential Studio User Interface Edition



Gallery Item with ToolTip

Applying Aero Theme

Office 2007 forms now have the ability to apply predefined color schemes—black, blue, or silver—with a glassy effect.

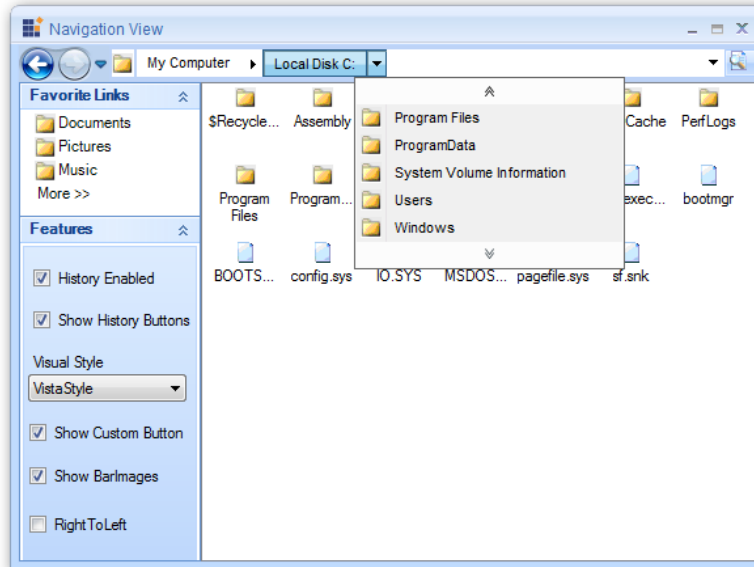


***Office 2007 Forms with
and without Aero Theme***

Setting Maximum Items for Pop-Up

The Navigation View now supports setting a maximum number of items to be displayed, and it has the ability to prevent pop-up windows.

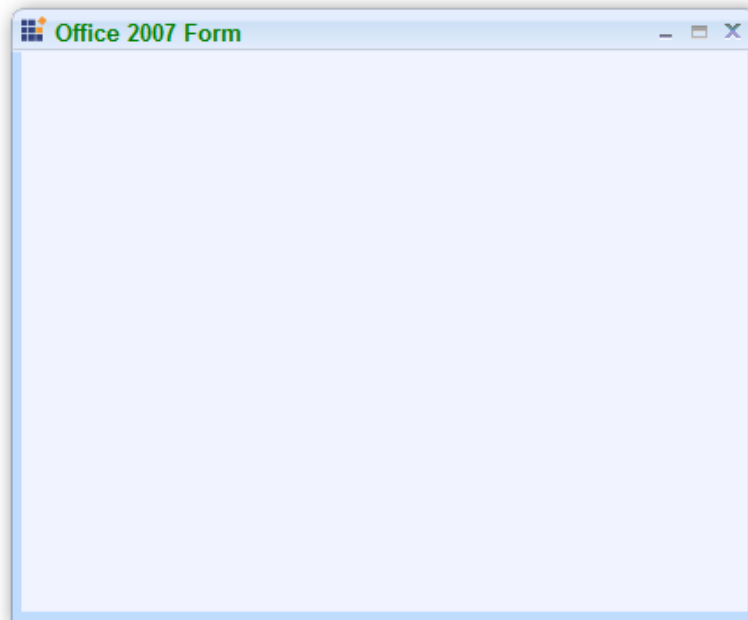
What's New for 2010 Volume 3: Essential Studio User Interface Edition



Pop-up with Customized Maximum Items

Caption Foreground Color in Office2007Form

Office 2007 forms now provide support for setting foreground color for caption text.



Office 2007 Form with Caption Text Color Set

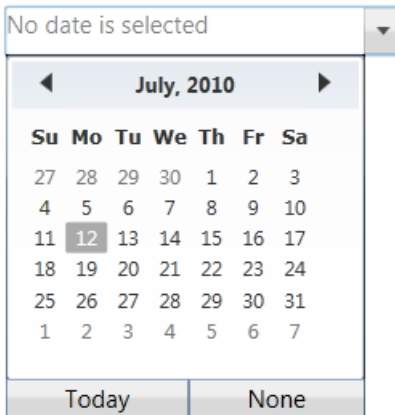
Revamping of Editors Package

The Editors Package—including DoubleTextBox, IntegerTextBox, CurrencyTextBox, PercentTextBox—has been revamped. New APIs have been added to enhance the usability of the controls and many issues were fixed.

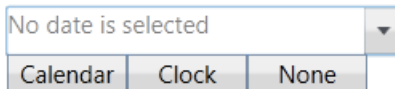
Tools for WPF

Classic Pop-up Style Support

DateTimeEdit now supports two different pop-up styles. You can switch between the default pop-up style and the Classic style.



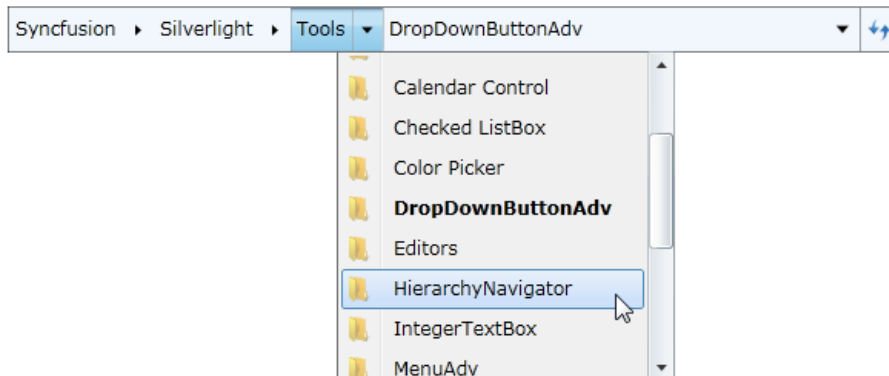
Date-Time Edit



Classic Style

Hierarchical Navigator

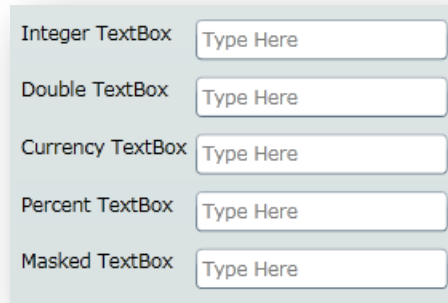
The **HierarchyNavigator** control for WPF provides a bread-crumbs interface similar to the Windows 7 address bar in Windows Explorer, which is used to navigate hierarchical items. It can be completely customized in Expression Blend with custom templates. It also provides command binding with MVVM support, data binding via HierarchicalDataTemplate, XML data, and WCF services.



HierarchyNavigator Control

Watermarks

All editor controls now support watermarks.



Watermarks

ButtonAdv

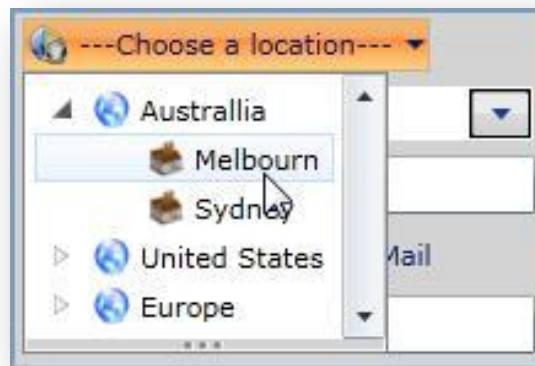
Expression Blend support has been added, as well as command binding, to ButtonAdv. Various size modes and built-in themes are also available.



ButtonAdv Control

DropDownButtonAdv

In the DropDownButtonAdv control, Expression Blend support has been added; various size modes are now available; and built-in themes have been included.



DropDownButtonAdv Control

SplitButtonAdv

Expression Blend support and command binding have been added to the SplitButtonAdv control. Built-in themes and drop-down styles have also been included, and various size modes are now available.



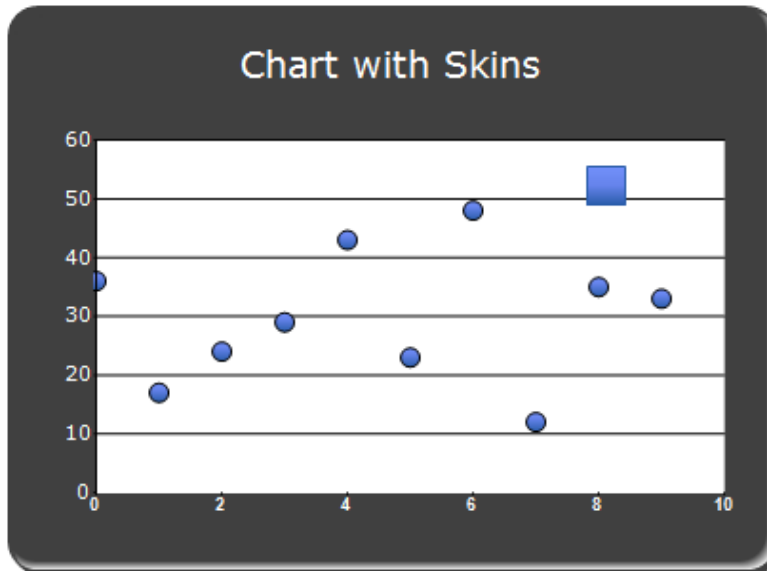
SplitButtonAdv

Essential Chart

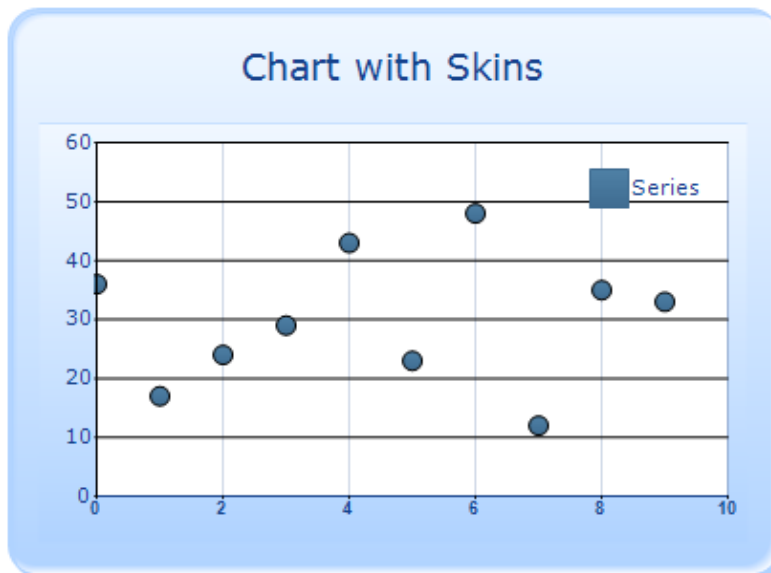
Chart for ASP.NET

Skins Support

Essential Chart for ASP.NET adds new skins to its 14 built-in varieties, making appearance customization easy.



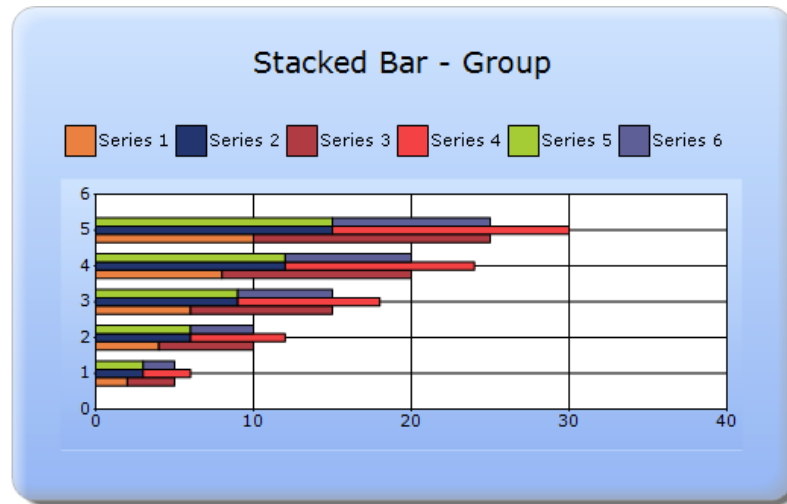
Blend Skin



Office 2007 Blue Skin

Stacking Series with a Group Chart

Stacked group charts allow you to group a series with another series by using a group name. This way a grouped series can be shown as a separate stacking



Stacking Bar with Groups

Chart for ASP.NET MVC

ToolTip Support

Essential Chart supports ToolTips that display chart coordinates (x and y) for data at a particular point as well as information about the data point.

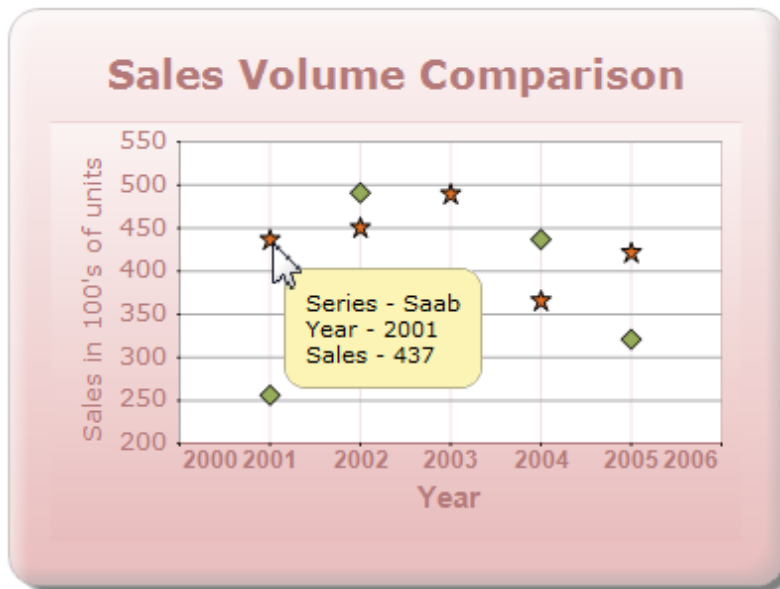


Chart ToolTip

Watermark Support

Watermark support has been added to show text, images, or both as watermarks inside the chart area.



Chart with Watermark

Toolbars

Toolbars that can be dragged have been added with various options, allowing you to save, copy, and print a chart in just a few clicks.

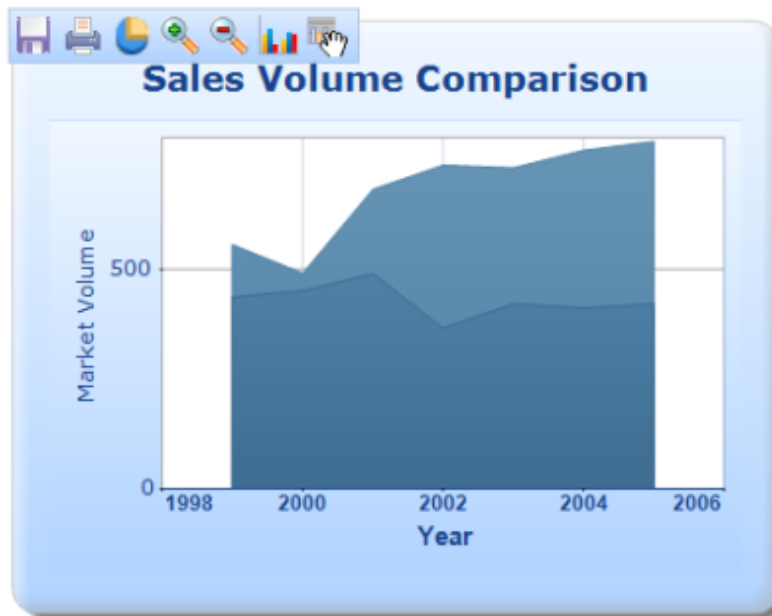


Chart with Toolbar



Toolbar Structure

Context Menus

Essential Chart for ASP.NET MVC now comes with context menu support. Context menus can be used to save a chart, print a chart, and more.

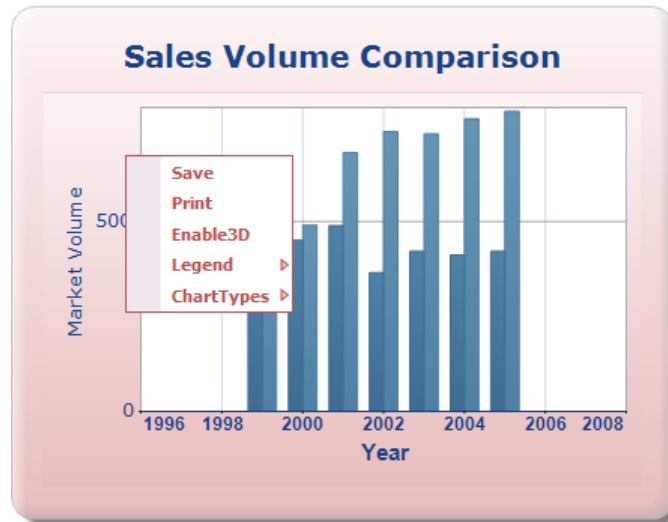


Chart with Context Menu

Chart Series Skins

Skins have been added with nine built-in themes for a chart series, adding a new level of professionalism to charts. The following skins are available: Pastel, Nature, GrayScale, EarthTone, Triad, DefaultAlpha, Colorful, Analog, and WarmCold

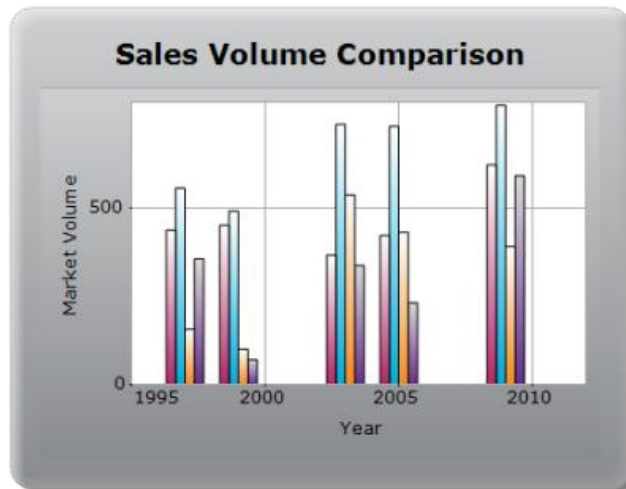
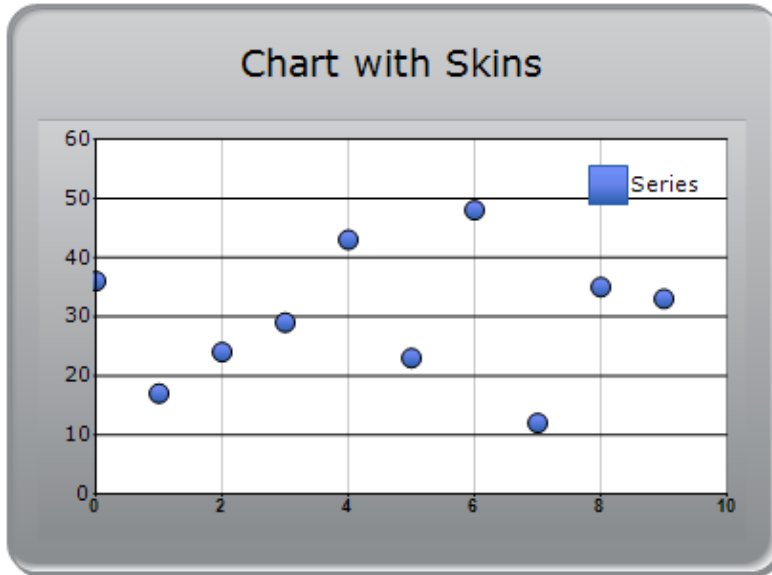


Chart with Analog Series Skins

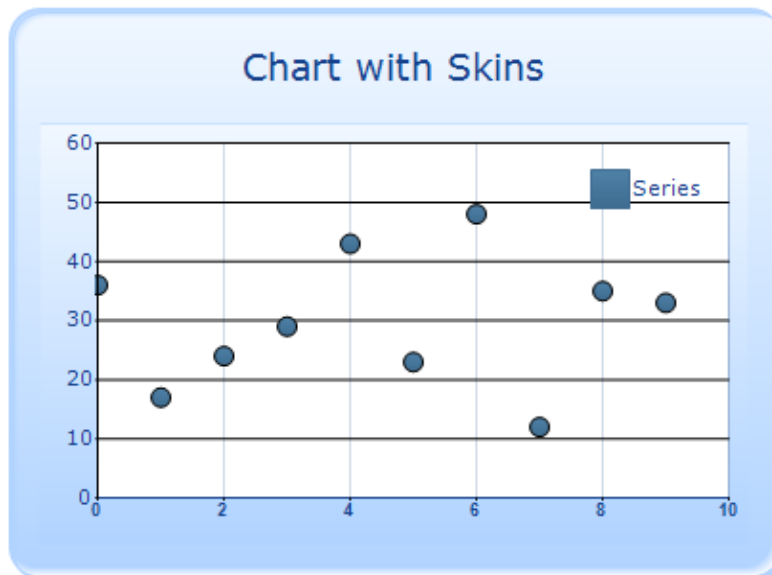
Chart for Windows Forms

Skins Support

Essential Chart for windows contains 14 different types of built-in skins to easily customize its appearance.



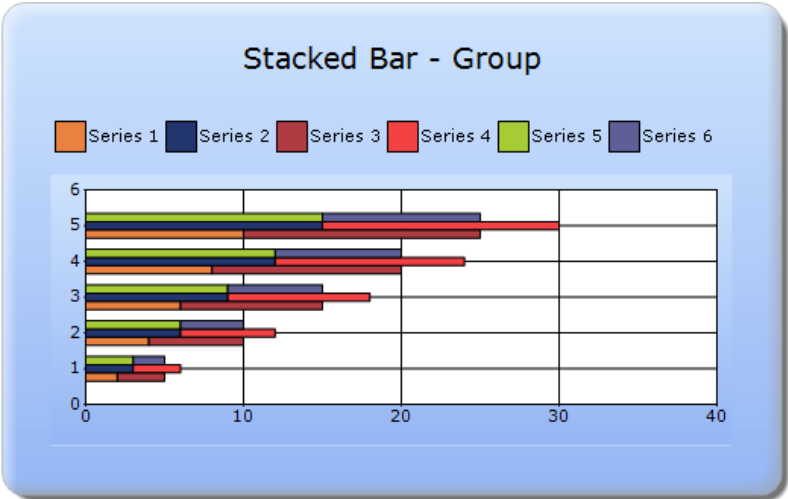
Office 2007 Black Skin



Office 2007 Blue Skin

Stacking Series with a Group

Stacked Group Charts allow you to group a series with another series using the group name so that the grouped series is shown as a separate stacking.



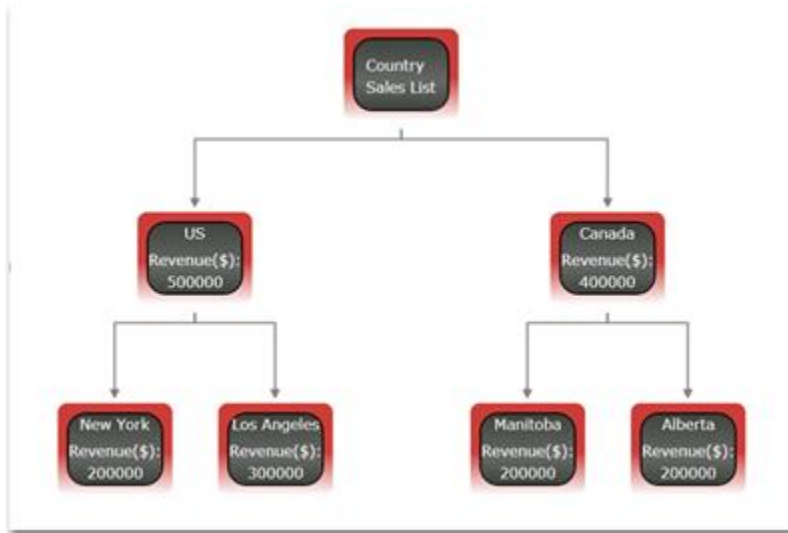
Stacking Bar with Groups

Essential Diagram

Diagram for Silverlight

Data Binding

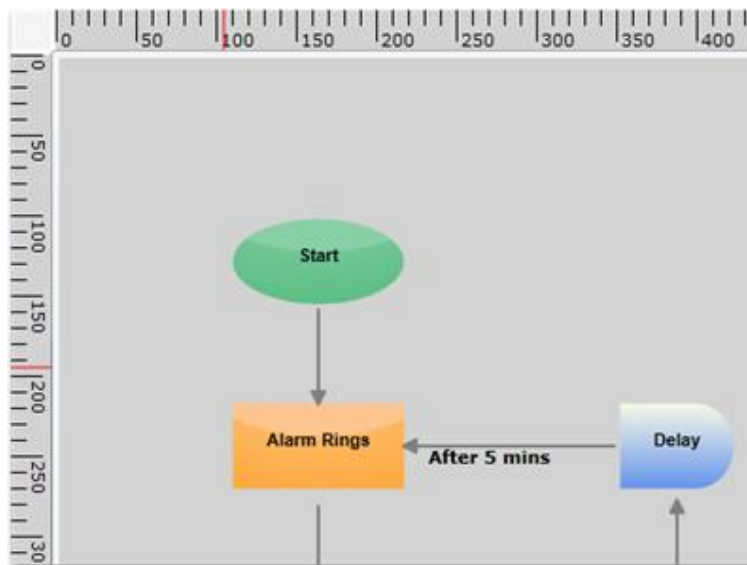
Binding to a business object with all its collections is now supported by using the hierarchical data template with a directed-tree layout. Hierarchical data templates can be used to generate a hierarchical tree view of the collection of items obtained by using the ItemsSource property.



Directed-Tree Layout

Rulers

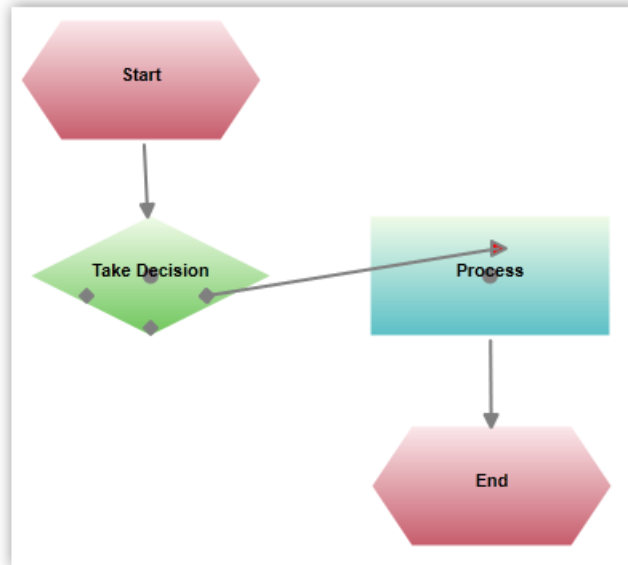
Horizontal and vertical rulers are provided to indicate the coordinates of the mouse pointer position with respect to the view.



Rulers

Connection Ports

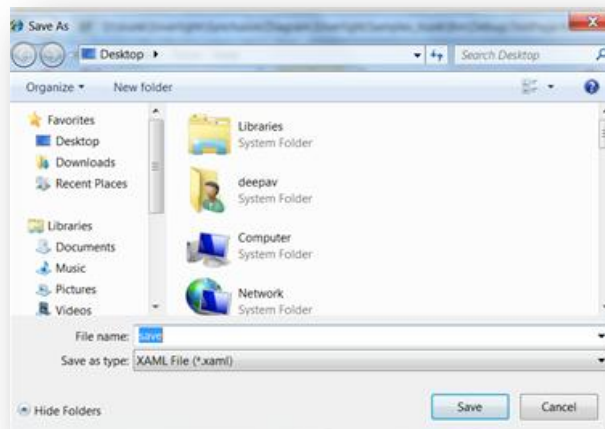
Essential Diagram for Silverlight now provides the ability to define custom ports for making connections. Any number of ports can be defined on a node. By default, every node has a center port. The ports can also be customized to improve their look and feel.



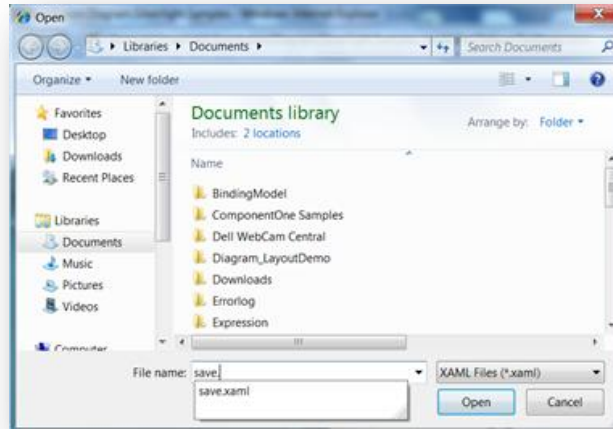
Connection Ports

Serialization

Essential Diagram for Silverlight supports saving and loading a diagram page into a XAML file. Users can save a diagram page in stream or in a XAML file for future use and load it back when necessary.



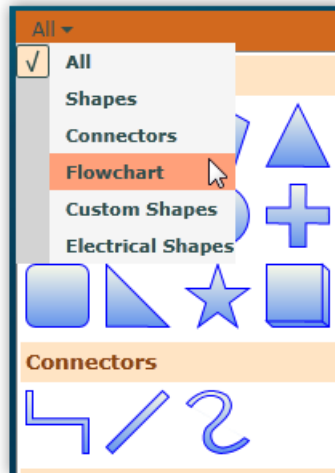
Saving the Diagram Page



Loading a Diagram Page

Symbol Palette Filter

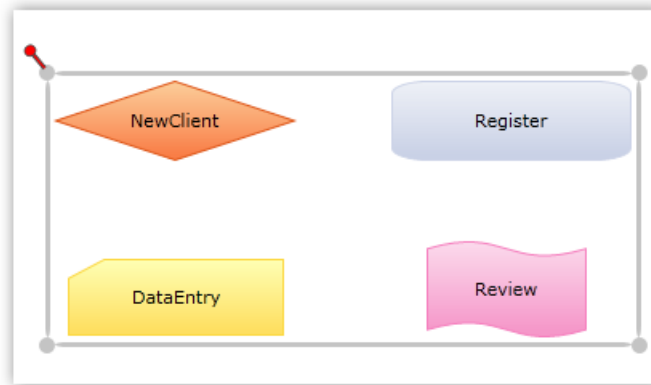
Symbol palette filters can be used to select a group to be displayed. Each symbol-palette group can be assigned a Filter Index to enable filtering of that group. This is particularly useful when there are a large number of groups in the symbol palette. The currently required group can be filtered out and displayed on the symbol palette.



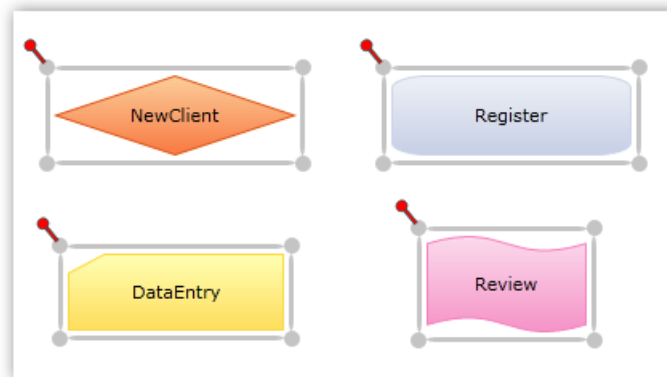
Symbol Palette Filter

Grouping and Ungrouping

Essential Diagram for Silverlight supports the grouping and ungrouping of nodes. When grouping a set of objects, any operation performed on the group affects all grouped objects. However, items in the group can also be edited by selecting them individually. When ungrouping, items are removed from the group, and begin to act as individual entities.



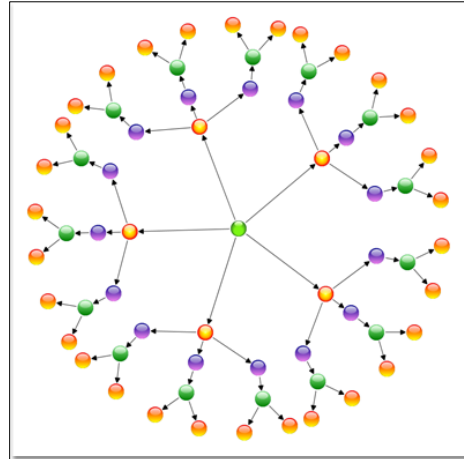
Grouped Nodes



Ungrouped Nodes

Radial Tree Layout

Radial Tree Layout Manager is a specialization of the Directed Tree Layout Manager that employs a circular layout algorithm for locating diagram nodes. RadialTreeLayout arranges nodes in a circular layout, positioning the root node at the center of the graph and child nodes in a circular fashion around the root. Sub-trees formed by the branching of child nodes are located radially around other child nodes.

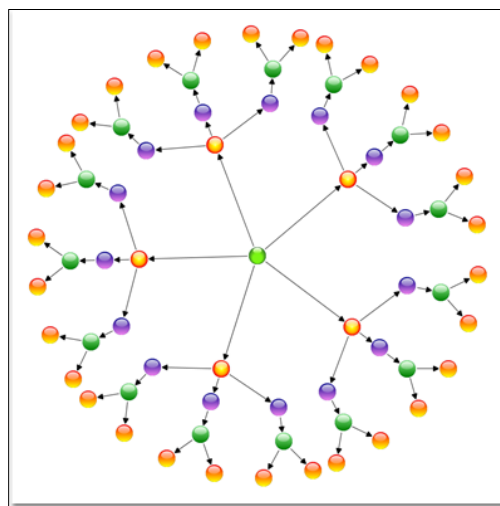


Radial Tree Layout

Diagram for WPF

Radial Tree Layout

The Radial Tree Layout Manager is a specialization of the Directed Tree Layout Manager that employs a circular layout algorithm for locating diagram nodes. RadialTreeLayout arranges nodes in a circular layout, positioning the root node at the center of the graph and the child nodes in a circular fashion around the root. Sub-trees formed by the branching of child nodes are located radially around other child nodes.



Radial Tree Layout

Clipboard Commands

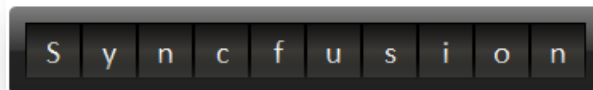
Clipboard commands have now been implemented to allow you to cut or copy selected objects on a page to the clipboard, and paste valid clipboard content onto the page.

Essential Gauge

Gauge for ASP.NET MVC

Rolling Gauge

A rolling gauge control has been added, which is used to display values as segments, allowing data to be presented in a rolling manner.



Rolling Gauge

Gauge Exporting

Exporting functionality has been added to the gauge control, allowing a gauge to be exported into various image formats on both the server and client side. The formats include JPEG, BMP, and GIF.



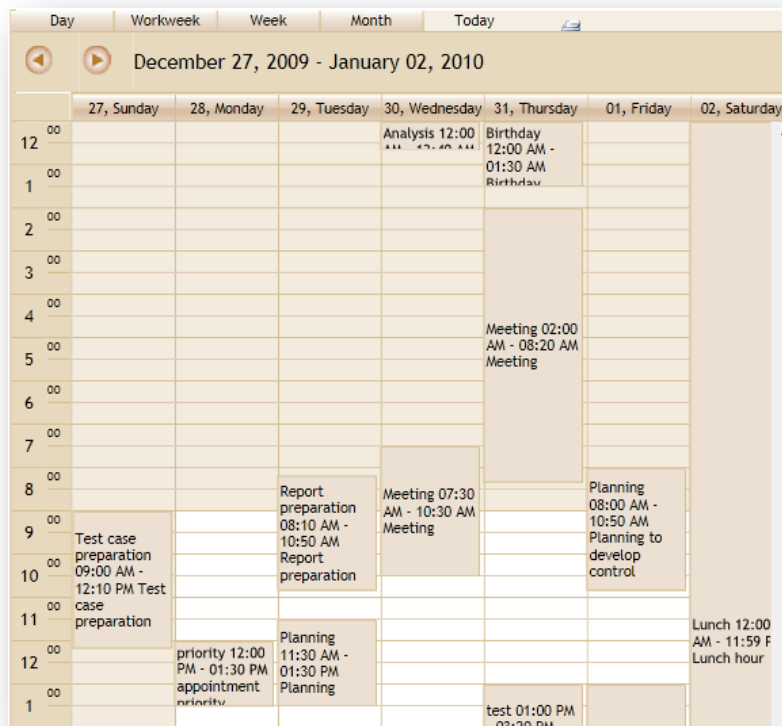
Gauge Exporting

Essential Schedule

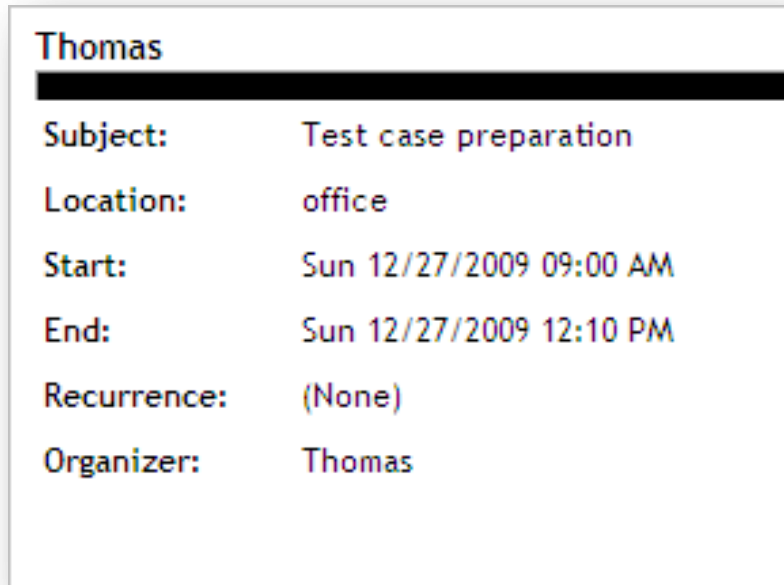
Schedule for ASP.NET MVC

Printing

By default, Essential Schedule prints schedules for days, weeks, workweeks, and months; however, you can now print specific appointments with the context menu.



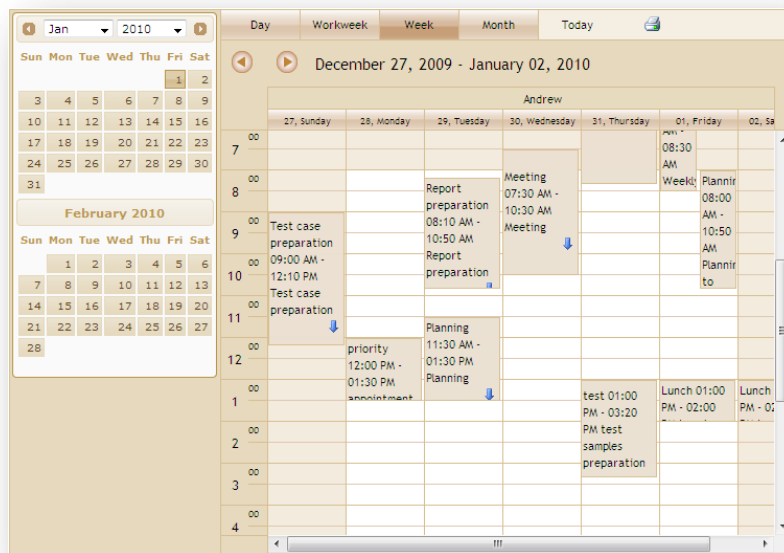
Printing a Schedule



Printing an Appointment

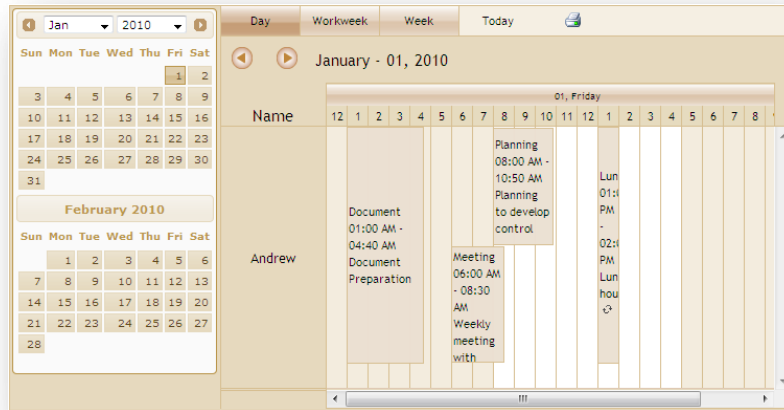
Schedule Mode

Essential Schedule can schedule appointments in a two different layouts--vertically and horizontally.



Schedule in Vertical Mode

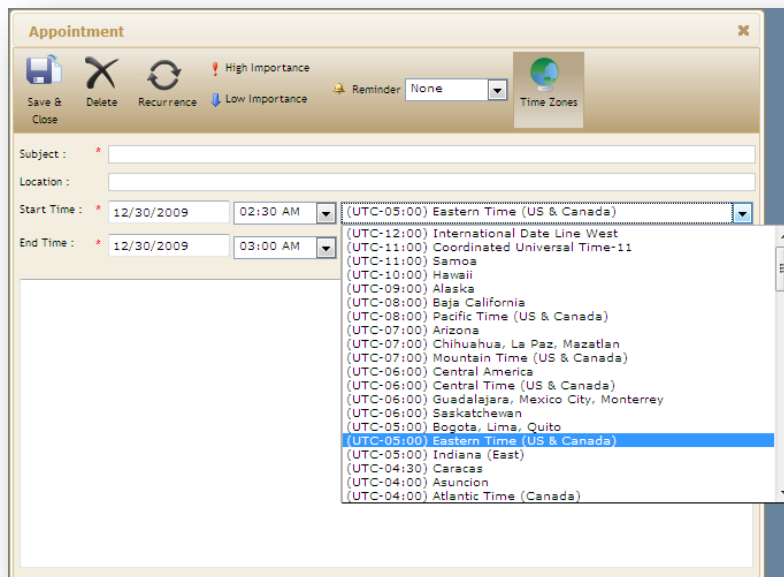
What's New for 2010 Volume 3: Essential Studio User Interface Edition



Schedule in Horizontal Mode

Time Zone

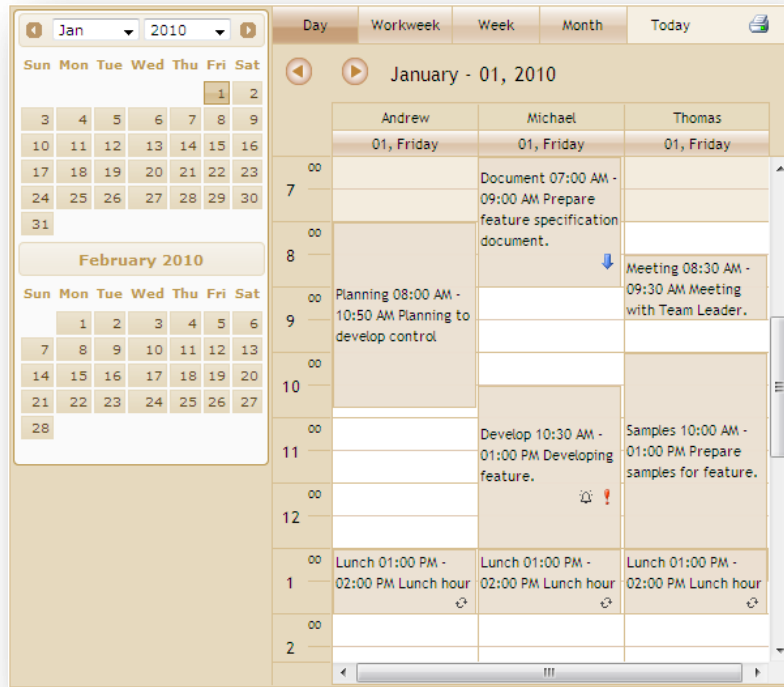
In Essential Schedule, appointment items' start and end times are saved in the Coordinated Universal Time (UTC) format. Appointment items are displayed with respect to time zone. When you change the time zone property, all appointment items move to the new time zone.



Time Zones

Calendar Navigation

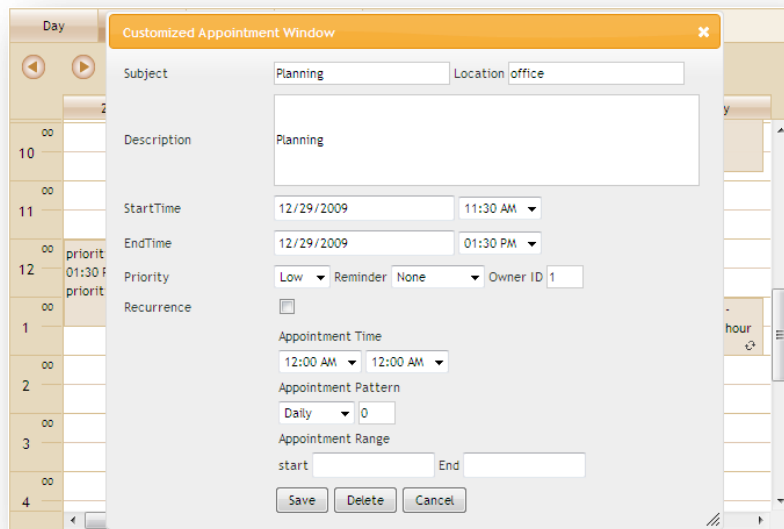
Essential Schedule provides Essential Calendar, a part of the schedule control that allows you to quickly navigate a schedule. By using this calendar navigation, you can easily move a schedule to any date.



Calendar Navigation

Client-Side Events

Essential Schedule can handle client-side events such as appointment selection and double-clicking a cell. Appointment windows can be customized by using this client side scripting.

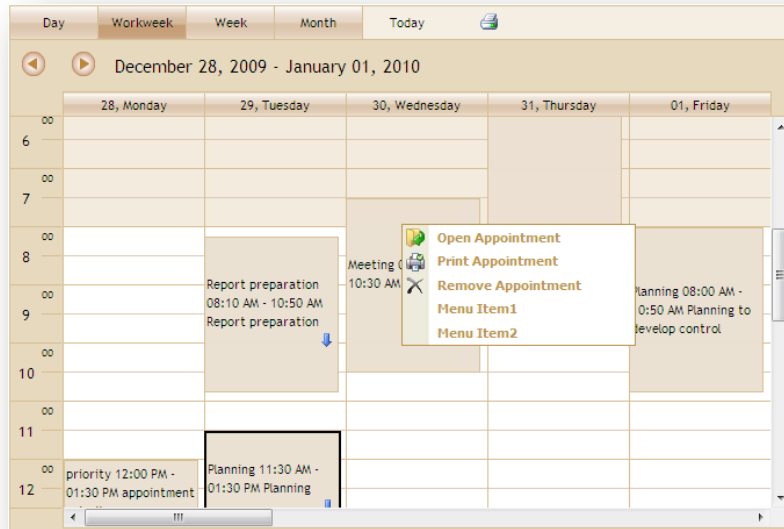


Customized Appointment Window Using Client-Side Events

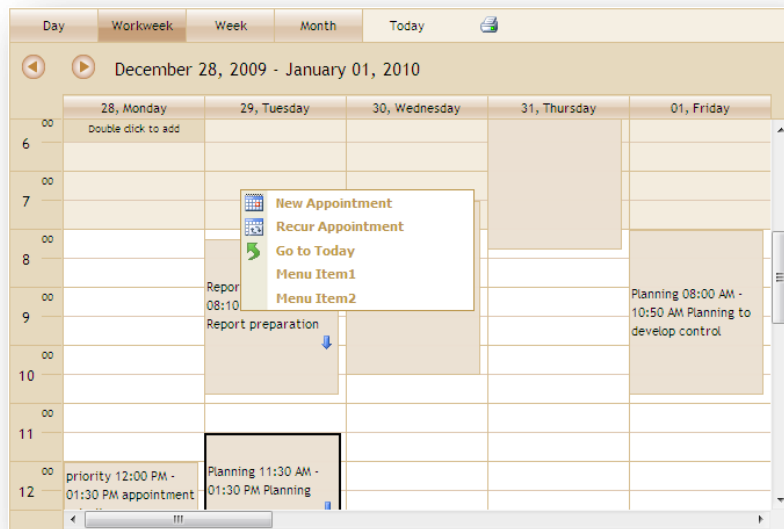
What's New for 2010 Volume 3: Essential Studio User Interface Edition

Context Menu

Essential Schedule allows you to display menus by right-clicking a schedule-control cell or appointment and adding, editing, deleting, or printing an appointment. It also provides options to add custom menu items.



Appointment Context Menu

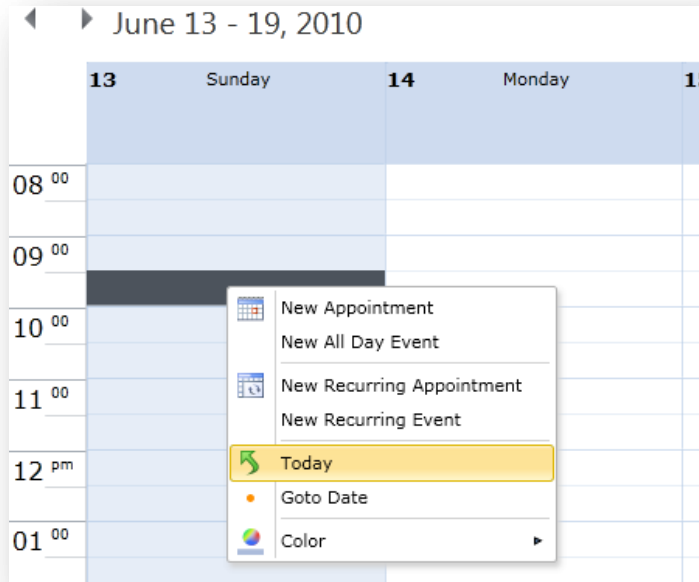


Cell Context Menu

Schedule for Silverlight

Right-Click Support

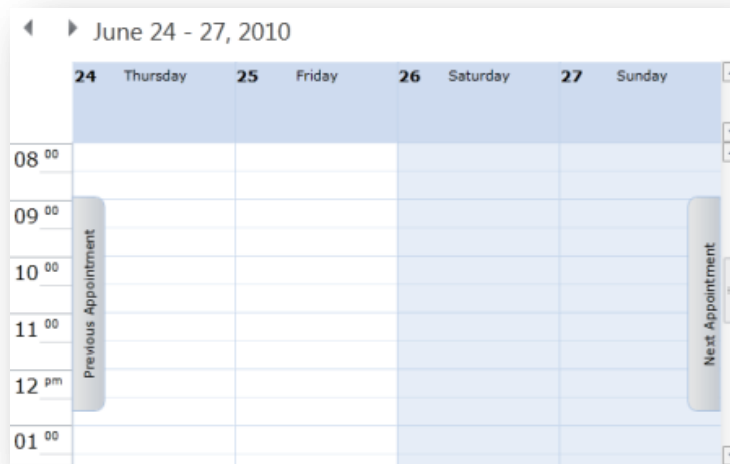
Essential Schedule now supports right-clicking on the context menu, allowing you to add custom menu items—a feature that can be enabled or disabled.



Right-Clicking the Context Menu

Next and Previous Appointment Navigation Buttons

Next and Previous navigation buttons, similar to the ones found in Microsoft Outlook, can be used to navigate to the next or previous appointment. These buttons are visible only when the selected date(s) do not have any appointments.



Next and Previous Buttons